

EPOWER

Q2 2024



WHY SERVICE AND
MAINTENANCE
MATTER

CUSTOM
SOLUTION FOR
MANUFACTURING
PLANT

ALKE
ELECTRIC
VEHICLES

Contents



03 Why Service & Maintenance Matters



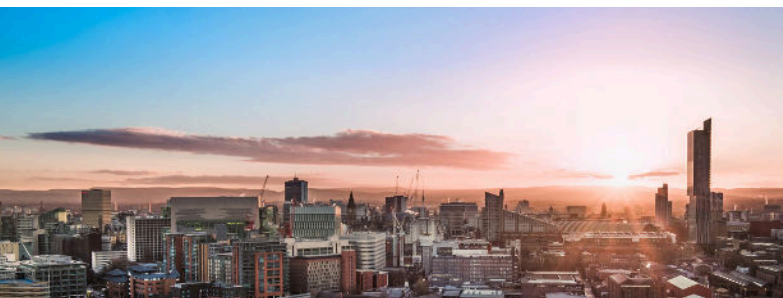
04 Latest News



06 Meet The Team



07 Product Spotlight



08 Contact

Why Service and Maintenance Matter

Electric vehicles (EVs) are revolutionising the way we think about transportation. They're eco-friendly, efficient, and represent the future of driving. However, like all vehicles, EVs require regular service and maintenance to ensure they remain in peak condition. While the mechanics might differ from traditional internal combustion engine vehicles, the importance of maintenance is just as crucial.

Extending Vehicle Lifespan

One of the most compelling reasons to keep up with EV maintenance is to extend the life of your vehicle. Regular check-ups can identify potential issues before they become major problems. For instance, components such as battery health, electric motor functionality and software systems require routine inspections to ensure they are operating optimally. Preventive maintenance helps in avoiding costly repairs down the line and ensures your EV runs smoothly for years to come.

Safety First

Safety is paramount when it comes to any vehicle, and EVs are no exception. Regular maintenance ensures that all critical systems are functioning correctly.

Optimising Performance

EVs are renowned for their performance, particularly their instant torque and smooth acceleration. Routine maintenance helps in preserving the vehicle's performance characteristics, ensuring that it delivers the same driving experience as the day it was delivered.



Resale Value

A well-maintained vehicle holds its value better than one that has been neglected. This is particularly true for EVs, where potential buyers will be keenly interested in the condition of the battery and other critical components. Keeping a comprehensive service record not only helps in maintaining your EV's performance but also boosts its resale value.

Trusting ePowerTrucks

Equipped with PDAs, our mobile engineers have instant access to your essential details, ensuring focused attention from the moment they arrive. With a comprehensive inventory of parts onboard, over 90% of issues can be resolved onsite during the initial visit.

Explore our service plans designed to streamline your maintenance efforts and save you both time and money. With a service contract, enjoy discounted visits and a 10% price reduction on parts, providing exceptional value for your investment.



Latest news

State-of-the-Art Electric Vehicles to Major Caravan Site in Northampton



ePowerTrucks is proud to announce the successful delivery of cutting-edge electric utility vehicles to a prominent caravan site in Northampton. This significant addition to the site's fleet marks a step forward in their commitment to sustainability and operational efficiency. The delivery included four AMP XL Road Legal Utility Vehicles and two AMP 6-Seater Electric Vehicles, tailored to meet the diverse needs of the expansive site.

The four AMP XL Road Legal Utility Vehicles are designed for versatility and performance. These robust electric utility vehicles are equipped to handle a variety of tasks, making them ideal for the operational demands of a large caravan site. With a focus on sustainability, the AMP XL offers zero emissions, reducing the environmental impact while maintaining high productivity levels.

Complementing the AMP XLs, the site has also incorporated two AMP 6-Seater Electric Vehicles into their fleet. These vehicles are perfect for transporting guests and staff efficiently across the large caravan site, ensuring comfort and reliability.

By integrating the AMP XL and AMP 6-Seater Electric Vehicles into their fleet, the caravan site is set to enhance its operational capabilities while reducing its carbon footprint. This delivery underscores ePowerTrucks' commitment to delivering innovative electric vehicle solutions that meet the unique needs of diverse industries.



Latest news

Custom Solution For Manufacturing Plant

Lift Safe proudly announces its recent collaboration with a renowned control systems manufacturer, delivering a cutting-edge solution tailored to their needs.

A fully stainless steel, battery-powered cleanroom classification 6 lifter equipped with a 360-degree powered rotator has been deployed to streamline operations in the manufacturer's production and testing environment.

This advanced system is engineered to effortlessly lift and rotate 100kg laser head control units, offering unparalleled efficiency and precision.

Lift Safe proudly announces its recent collaboration with a renowned control systems manufacturer, delivering a cutting-edge solution tailored to their needs.



Custom EP 500 Electric Platform Truck to Reading Distributor



ePowerTrucks has successfully supplied a Reading-based distributor with the versatile EP 500 electric platform truck, customised with a water bowser attachment for efficient plant watering.

This collaboration highlights ePowerTrucks' commitment to providing tailored electric vehicle solutions to meet specific customer needs.

Electric Trucks Transform Holiday Park Maintenance

We are excited to announce the delivery of two Amps XL electric trucks to a holiday park in the Lake District! This marks a significant step in our mission to provide eco-friendly and efficient transportation solutions.

The holiday park is replacing its noisy diesel vans with our silent, zero-emission Amps XL trucks for their upkeep and maintenance needs. Our electric trucks will help preserve the tranquillity and natural beauty that visitors cherish while reducing the park's carbon footprint.

We are proud to support the park's commitment to sustainability and look forward to seeing how our electric vehicles enhance the guest experience and operational efficiency.



Meet the team

Steve Challinor

TECHNICAL SUPPORT



With an impressive 19 years of experience in the electrical and service management fields, Steve brings not just technical know-how but a genuine passion for helping others and making a difference.

Steve's journey began many years ago as an electrician, his role naturally evolved into service management, where he seamlessly blended his technical skills with leadership and a commitment to delivering top-notch service.

Today, Steve is at the heart of our Technical Support team. Whether he's untangling intricate technical challenges or guiding our clients, his after sales' colleagues and the field team through solutions with patience and clarity, Steve's dedication ensures that our operations run smoothly and our customers feel supported.

Beyond his professional achievements, Steve is admired for his approachable nature and the personal touch he brings to everything he does.

Here's to many more milestones and shared successes ahead!

Product spotlight

Alke Electric Vehicles






Electric Utility Vehicles

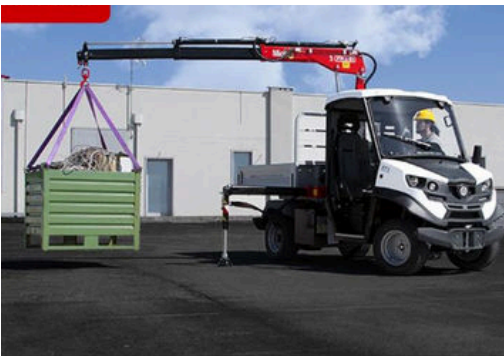


Discover the road legal Alke range of electric vehicles, where cutting-edge technology meets unmatched performance. Ideal for both on and off-road environments,

Alke' vehicles boast impressive features like a load capacity of up to 1,630 kg and on road towing capabilities up to 2,000 kg. With over 100 configuration options, high autonomy, and low energy consumption,

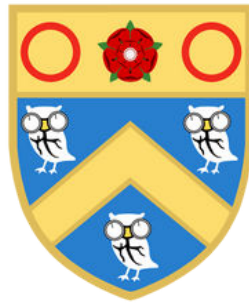
Alke' electric vehicles offer versatile and eco-friendly solutions for various professional needs. Embrace the future of transportation with Alke's high-performance, zero-emission vehicles.

	Range	Load Capacity (kg)	Cargo Area (mm)	Towing Capacity (On Road) (kg)	Towing Capacity (Off Road) (kg)	Cab Seats
ATX 340 E	Up to 90 miles	1,275	2,000 x 1,400 1,800 x 1,230	2,000	3,000	
ATX 340 EH	Up to 90 miles	1,630	2,500 x 1,400 1,000 x 1,400 1,800 x 1,230	2,000	4,500	
ATX 340 ED	Up to 90 miles	1,155	2,000 x 1,400 1,800 x 1,230	2,000	3,000	
ATX 330 E	Up to 45 miles	1,220	2,000 x 1,400 1,800 x 1,230	2,000	3,000	
ATX 320 E	Up to 45 miles	610	1,800 x 1,230	1,200	2,000	
ATX 310 E	Up to 45 miles	620	1,300 x 1230	1,200	2,000	



**“HAPPY CUSTOMERS ARE YOUR BIGGEST
ADVOCATES AND CAN BECOME YOUR
MOST SUCCESSFUL SALES TEAM”**

PROUD SPONSORS OF



MAHDLO

IF YOU HAVE ANY QUESTIONS ABOUT THE SERVICES WE PROVIDE PLEASE
CONTACT US ON THE INFO BELOW.



Email ; info@ePowerTrucks.co.uk
Web : www.ePowerTrucks.co.uk



Email : info@liftsafe.net
Web : www.liftsafe.net

Tel : +44 (0) 161 626 9628

Head Office

Unit 16 Hawksley Court
Hawksley Street Industrial Estate
Oldham
OL8 4PQ

London Depot

Unit 5 Maybank Industrial Estate
South Woodford
E18 1ET